

Inside this issue

Open Morning	1
Allotment Competition	2
AGM	
Rent renewal	3
Jade's Sky Dive	
Shop News	4
Site Reminders	
Wisley Coach Trip	5
Social Events	
SW region news	6
Spotted on the plots	
Plot inspections	7
Stag beetles	
Recipe	8

Open morning

It was a pleasure to be on the gate and able to greet all who attended this year's Open Morning. There appeared to be less external visitors but far more members attending compared to previous years and I became aware that many plots had changed hands since I left the committee 18 months ago, so my primary goal as we move into the autumn is to get to know all who have joined us during that period.

Despite an earlier forecast, the weather was on our side with glorious sunshine as we enjoyed this chance to come together. We were grateful to Phil Cowan who provided live music, were pleased to meet the very creative Nature in Art group and to browse the variety of stalls.

The raffle was our biggest to date, contributing significantly to the overall total raised of £1567.83, the guided tours were popular and we sold out of bacon butties, I believe. Fresh allotment produce is always popular and our thanks go to all who generously donated fruit and vegetables, bric-a-brac, books, plants, tools and tombola prizes. To those who ran the stalls and the games area and to all who helped behind the scenes, we say a huge THANK YOU. We really do have a multi-talented team! .../



Thank you to the following companies who kindly donated vouchers for our open day raffle

- ◇ *Stewarts garden centre*
- ◇ *Alpine adventure park—snowtrax*
- ◇ *Den's fish and chips.*

Thank you also to our members who donated prizes.

Any enquiries,
please call

07766110660

or email



beas.secretary@outlook.com

www.bournemoutheastallotmentsociety.co.uk

www.facebook.com/lingdaleplots

[twitter: @lingdaleplots](https://twitter.com/lingdaleplots)

/... It was strange not seeing Linda Taylor masterminding things or Neil Rodgers serving the bacon butties with Pat, but the day was a chance to remember both of these past Chairs and their important part in the life of our society. Clare McCarty-Brooker and her team did an amazing job of planning and ensuring that the day ran smoothly and the committee are grateful to her for taking this on.

Lynda Clarke, Chair



ALLOTMENT COMPETITION

Congratulations to all our prize winners!

1st place: Plot 5 - Paul & Brigitte Duffy

2nd place: Plot 38A/80B – Andy & Narelle Froude

3rd place: Plot 60C – Kim & Denise Lowe

4th place: Plot 84A – Brian Hoare

Best newcomer: Plot 75B – Ben Piercy & Hayley Ryan

Federation Awards meeting

***Wednesday 5th October at 7.00 for 7.30pm
at the North Bournemouth site, Priestley Road, Bournemouth***

Prize winners will receive their awards at 7.30pm. This will be followed by very light refreshments. The rest of the evening, until about 9.00pm, will be an open discussion. If you would like to attend, please let me know by email at beas.chair@outlook.com so that the numbers are manageable. There is parking at the site.

Advance notice of our Annual General Meeting

Wednesday 7th December at 7.30pm in Beaufort Community Centre

Please hold this date/time and start thinking about this important event.

There are a number of things to consider:

Could you stand for election to the committee? It is always better if a management committee reflects the needs and views of the wide variety of ages and nationalities of the members. Currently, this is not the case and whilst they do sterling work, new members would be welcome.

Are there things that you would like to see changed? If this is governed by a rule, there would need to be a resolution at the AGM to change this. Any suggested amendments to rules would need to be with the Secretary (beas.secretary@outlook.com) before the 12th October so that the committee can discuss this and formulate a resolution where necessary.

Would you be able to contribute to working parties to carry out tasks around the site? We shall be refreshing our list of helpers.

Lynda Clarke, Chair

COMMITTEE BUSINESS - An important reminder

Rents, together with membership fees and NAS affiliation fees are due.

All members should have received a Rent Renewal letter from the Secretary.

Well Done Jade!!!

Linda Taylor always had a wish to do a sky dive with her Granddaughter, Jade Dunn. They spoke about it many times but unfortunately Linda's deteriorating health prevented her from fulfilling that ambition. Linda passed peacefully on 31st May 2022.

So, Jade, who is much like Linda in many ways, decided to 'go it alone' and performed the sky dive on her own on Friday 4th August. Jade (22), at 5ft 1in was in very safe hands with a 6ft 3in 'tethered' instructor.

A very nervous but excited Jade completed that jump (from 10,000 feet over Old Sarum near Salisbury) and with her close family all there, had a fabulous time.

From this height Jade had the amazing experience of a 'free-fall' for 30 seconds at around 125mph before the parachute was released. She admitted afterwards that the best bit of the dive was when the parachute opened, the 'rush' of air stopped and the gentle descent and amazing views across Salisbury Plain filled her heart with joy.

She was thrilled that she had a small pouch of Linda's ashes with her and in reality, really did do that jump with her Nana.

She did this in aid of MacMillan Caring Locally, Christchurch – specifically to support the Hospice at Home initiative (H@H) team in her Nana's name. The H@H initiative was only started in April 2022 and is on a one-year' trial. They provided a wonderful and unique service enabling Linda's family to care for her at home during her final few weeks. This would not have been possible without them and Linda loved being at home and close to her beautiful garden and family.



Jade raised a shade over £3500 with a little more to come in and a further £1500 was paid directly to the Charity in Linda's memory by others and in support of Jade's adventure.

The H@H initiative is gathering pace and intends to provide a night service very soon. People like Jade really do make a difference to those very special organisations which provide such wonderful support and David, Linda's husband' wants to thank BEAS, their individual members and everyone else who donated to this



very important Charity.

<http://mediaroom.goskydive.com/jump/04-08-2022-954826>



What an impressive achievement Jade!!

Shop News

The shop continues to trade well during the summer months and we are very grateful for all the donations of plants to sell on to members. This is especially helpful for new members who may only want a few items to try out and are not used to planting seeds, potting them on etc. At the moment we have some Nero Kale and Spring Cabbage plants available and ready to go into the ground.

Our shop hours have now reduced, as planned, to an hour on Tuesday morning and two hours on Sunday morning. This will continue through to the end of November, when we shall close for the winter. The committee are debating what hours to arrange for next year, whether Thursday afternoon has been welcomed this year as a change from the morning, as well as how long to open for on Saturday during spring and summer, remembering that we rely on volunteers to staff the shop. If you have any views on this please drop an email to BEAS.shopmanager@outlook.com or drop a note in the post box addressed to the Shop Manager, especially if you would like to join the team of volunteers next year.

At the time of writing, we are scheduled to receive our last delivery of compost for the year on Sunday 18th September. This may well be the last from this supplier as he is considering giving up (at the age of 79!). We are grateful to the few volunteers who have helped unload over the years at an early hour

of Sunday morning. We shall probably need to find a new supplier and make different arrangements for the future, but those of us who have been doing this are getting on in years and I for one have suffered from a bad back, so we need some "young blood". If you would like to help, please let me know and I'll confirm the arrangements when we know them.

If you are unable to make it to the shop during our opening hours, then don't forget that we still have our "Click & Collect/Deliver" service available. This is something that we started during the first lockdown in 2020 and has proved a benefit to many members. You can order by phone or email, pay by online transfer and arrange to either collect the items at a mutually convenient time or have them delivered to your plot.

Seed and potato orders have started arriving and are being processed. Please don't leave it too late to get yours in as you may be disappointed if we cannot supply the variety of potatoes you would like. They come in sacks of 10 bags, so we need to buy only the full number of sacks sold or risk having some left over. The very final day for receipt of both is Sunday 30th October. Kings Seeds catalogues and order forms, together with potato order forms, are available in the shop, the community area and, of course, from our website. Seeds should be available in early January with the seed potatoes around the end of January.

As ever, if there is anything that you think we could successfully stock please let us know.

Site reminders for all

Saving water 2

We wrote in the Spring newsletter the article below. In the light of the problems with the water supply midsummer, it is worth repeating;

The supply to the water butts is turned off in the autumn to protect the system from weather damage, principally frost, which can affect the float system, pipework and the butt itself. This should also prevent above ground and underground wastage of water which could remain undiscovered for some time.

During this break the butts should be emptied and any sand etc. in the bottom cleaned out. This must be carried out by the users, i.e. plot holders

(not necessarily the plot holder on which the butt sits).

It is turned back on in the spring. The precise timing is dependent on two factors, the weather, and the cleaning of the butts.

*It is appreciated that sometimes water is needed for winter tolerant seedlings or plants. **We strongly recommend that gutters and rainwater butts are installed to new and existing sheds to provide a useful water supply.** They will also reduce the site water consumption and therefore our rents!*

In the event of a drought order forcing us to turn off the mains water supply in the summer, a rainwater supply would be very useful.

BEAS coach trip to WISLEY RHS Gardens



On Wednesday 14th September 2022, we returned to visit RHS Wisley Gardens.

What started as a very rainy day had turned fine by the time we arrived and we all enjoyed a very sunny afternoon!



It was a poignant visit as her Majesty Queen Elizabeth was the patron of the RHS and had opened 'The Glasshouse' along with HRH The Duke of Edinburgh on 26th June 2007.



There was a wide variety of flowers in bloom, historical and experimental planting, Jubilee Arboretum and the Alpine Meadow to name a few of the delights we saw on our trip! The new Hilltop, and adjacent World Food Garden were well worth a visit, as the garden was like a very large allotment. They are doing a no-dig/ dig experiment as well!

Thank you to those who joined us and Southcoast Coaches for a smooth journey.
and Andrew Dawson for organising!

The August bacon buttie Sunday social was a sell-out !

We have enjoyed our Sunday Socials including freshly cooked bacon rolls! Thank you to the BEAS Social Group who have made approximately 100 bacon rolls and numerous hot drinks since March!

It has proved to be a great opportunity to meet up, meet others and enjoy the communal area.

The last two Sunday Socials will be taking place on

**Sunday 25th September and
Sunday 30th October
at 10am to 12pm.**



All welcome!

Winter Social

Our winter social event will be held on **Saturday 3rd December**. This will have a Christmas theme. Please put this date in your diary now.

Clare will be delighted to receive any suitable donations or offers of help. You can ring/text her on 07967 145602 or email her at beas.clare@outlook.com

Your Season of Stories Art and Poetry session

In August, poet Sarah Acton and artist Ilse Black delivered a gentle session of art and words called Your Season of Stories. The central theme focussed on the connections between people and nature. Participants from our community and local neighbourhood enjoyed a reflective and creative session incorporating sun printing with plants and flowers from the site and words and ideas inspired by the location. We are grateful to the leaders of this session as well as the *Nature, Art and Wellbeing Community Fund*, which supported this project

Participants of this and other art sessions have resumed their independent creative mornings starting from Tuesday 13th September at 10 am in the big green shed.

All welcome.—no talent required or expected!

NEWS from the SOUTHWEST REGION of the NATIONAL ALLOTMENT SOCIETY

I hope that all BEAS members are aware that they are also Affiliated Members of NAS and that there is a SW Regional Committee. What you might not know is that the regional committee organise online winter talks via Zoom to which you are warmly invited. These will be held in October, immediately after the short AGM business meeting, in November, January and February. Speakers already booked are the NAS Research Development Officer and Rod Weston from Carry On Composting. We are also seeking speakers from Grounded Community and on Rainwater Harvesting. Links for these talks will be forwarded by Dave Taylor, BEAS Secretary in due course and I hope to see many of you online.

SW NAS AGM

Wednesday 19th October at 7.00pm via Zoom

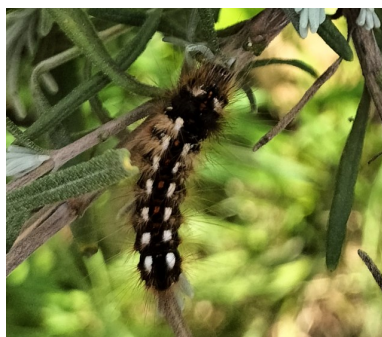
All BEAS members are warmly invited to this online meeting. The business will take about 30 minutes and will be followed by an illustrated talk from **Dr Deborah Burn**, the NAS Research and Development Officer, entitled: "Learning from the Past, Plotting for the Future". Here is her pen portrait to give you a flavour of what's to expect:

"Deborah has been at the forefront of allotments policy work nationally for almost 20 years and will share stories, ideas and reflections which can help us all to think about plotting a positive future for allotments in the South West and beyond. From 2003 to 2011 she worked for the Allotments Regeneration Initiative, a UK-wide partnership project to get more people involved in allotments at a time when allotments were not as popular as they are now and many sites were derelict, through her PhD-level study of allotments and her work now with NAS when the popularity of allotments is at an all-time high. *What lessons can we all learn and how can we all work together to ensure a bright future for allotments with sufficient sites for everyone who wants a plot?* Along the way, Deborah will share anecdotes and the lessons she learned from her role as a twenty-something female Chair of a self-managed site in the mid-1990s (a time when women plotholders were a rarity), stories from her travels all around the UK to allotment sites with different cultures and management styles, through to her work in the noughties finding and training the regional 'cream of the crop' in allotment associations – many of whom now have senior roles in NAS."

Lynda Clarke
Secretary, SW NAS Committee

Spotted on the plots:

One of our plotholders took photographs of this caterpillar during August.



"We have tried to identify it, and the nearest we could get was a Knot Grass Moth caterpillar. It looks more bristly and scary on the photograph than in real life, it was just very small and I thought it had died, but after we had taken the first photograph we saw it was moving. It was on the lower branches of my lavender bushes."

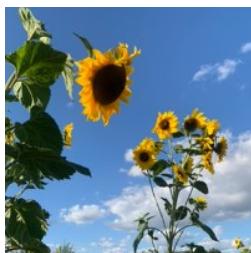


Also earlier in the summer there were many nests of caterpillars on the hedge outside the main gate which we were asked to remove as they could cause irritation and were just at the height for schoolchildren passing by to touch. So please observe with care and do let us know if you have sighted any interesting or unusual caterpillars.

Plot inspections

Don't forget – if you have difficulty working your plot through illness or other reasons, or if you are on holiday and someone else is looking after your plot, please let the Site Manager know at

beas.sitemanager@outlook.com



This year's remaining plot inspections:

Between 5th & 10th Oct

Between 16th & 21st November

Sighting of Stag Beetles in Lingdale Road Allotment Site

On the first of June this year, around 3pm, a male stag beetle was sighted on an allotment plot. In checking online that it had been a stag beetle, we found that sightings were becoming extremely rare. The People's Trust for Endangered Species asks that sightings are reported, so we reported to their website.

We learned a lot about stag beetles from the website, and we could have signed up to receive regular information about them and other endangered species, so this may be a good website to introduce to children who are taking an interest in wildlife, bugs, etc.

A good time to spot stag beetles is towards the end of May to the end of June. So where there was one male stag beetle there will probably be more. So please keep an eye out for them in late Spring, and report sightings to the committee, and to the PTES website.

In fact, we saw two female stag beetles only a few days later. They were smaller than the male, almost black, and without the antlers of course.

Facts about Stag Beetles

Stag beetles rely on dead wood for their survival and well-being, as well as soil. The females lay their eggs in the soil.

So logs, dead wood and soil, such as seen in the 'neglected' areas of gardens, or in natural woodland, are ideal places to see them.



Log pyramids

To create a habitat for all kinds of beetles, and other wildlife, create log pyramids, or log piles. Bury several deciduous logs upright, approx 50cm deep (around 20 inches). The logs can be the thickness of an adult's arm, so not too difficult to handle. Make sure that the spaces between the logs are filled with plenty of soil, so the beetles can use all parts of the logs.

Log piles

Log piles can be used for a whole range of creatures, if you have a quiet space at the back of your garden, or allotment plot. These can be added to gradually, as logs and wood become available.

Mapping your log pile

There is a website where you can map your log pile, and see the prevalence of them across the country. Once again, a way of getting involved in the movement to save our environment for wildlife, and a way of receiving masses of updated information.

Postal contact

People's Trust for Endangered Species
3 Cloisters House
8 Battersea Park Road
London SW8 4BG

Autumn on the Plots

- **Harvest**—You may still have crops to harvest such as sprouts, red cabbage, late cauliflower, radish, parsnips (later) plus pumpkin or squash - try the recipe below in preparation for Halloween
- **Clear**—Cut back asparagus and prune apples and pears, trim blackberries (cutting out fruited stems and tying in new ones), weed and clear to prepare the ground for next year
- **Feed the soil**—put mulch, compost and manure so that it can feed the soil during winter
- **Plant** - Autumn planting includes fruit trees/bushes, onions, garlic, early broad beans, early peas, spring cabbage, spinach, hardier lettuce, endive, radish, mizuna, bulbs, sow sweet peas
- **Stake**—tall growing brassica crops and draw up more soil round the roots, protect celery
- **Leave** - some areas for wildlife e.g. log piles, long grass, covered ponds
- **Clean**—greenhouses, cold frames and cloches; begin to wash pots and trays for next year



Pumpkin Pie recipe

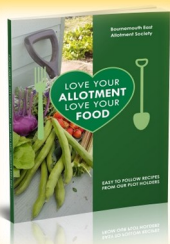
An autumn treat—delicious served with cream

Ingredients

750g/1lb 10oz pumpkin or butter-nut squash, peeled, deseeded and cut into chunks
 350g sweet shortcrust pastry
 plain flour, for dusting
 140g caster sugar
 ½ tsp salt
 ½ tsp fresh nutmeg, grated
 1 tsp cinnamon
 2 eggs, beaten
 25g butter, melted
 175ml milk
 1 tbsp icing sugar

Method

1. Boil chunks of pumpkin until tender and mash or blend to make a purée. let cool.
2. Line a tin with pastry and bake until the base is pale golden and biscuity and allow to cool slightly.
3. Combine the sugar, salt, nutmeg and half the cinnamon. Mix in the beaten eggs, melted butter and milk, then add to the pumpkin purée and stir to combine. Pour into the tart shell and cook for 10 mins, 220C/200C fan/gas 7. then reduce the temperature to 180C/160C fan/gas 4. Continue to bake for 35-40 mins until the filling has just set.
4. When cool, remove the pie from the tin. Dust over the top with a mixture of the remaining cinnamon and icing sugar. Serve chilled.



Allotment Cook Book

Available in the shop or

Contact beas.shopmanager@outlook.com

£7 for members (RRP £8.95)

